

Farmingdale Public School

A SYSTEM BUILT ON SUCCESSFUL COOPERATION AMONG FAMILY,
SCHOOL AND COMMUNITY.



FARMINGDALE PUBLIC SCHOOL

REFERENDUM TO ADDRESS DISTRICT'S
HIGHEST PRIORITY FACILITY AND
PROGRAMMATIC NEEDS

Referendum
Tuesday
September 26,
2017



Your vote
matters

COMMUNITY APPROACH



Community Input Encouraged

Detailed facility assessment performed

*Focused on **HIGHEST PRIORITIES***

*Reduced scope/cost to \$4.81 million
(original scope \$6.5M)*

Most critical infrastructure needs

Improvements/ *existing building*

Safety and Security

Secure main entrance / office relocation

Interior Renovations:

Interior door and intruder deterrent hardware, handicap improvements, bathroom improvements, flooring, gym flooring

Building System Upgrades:

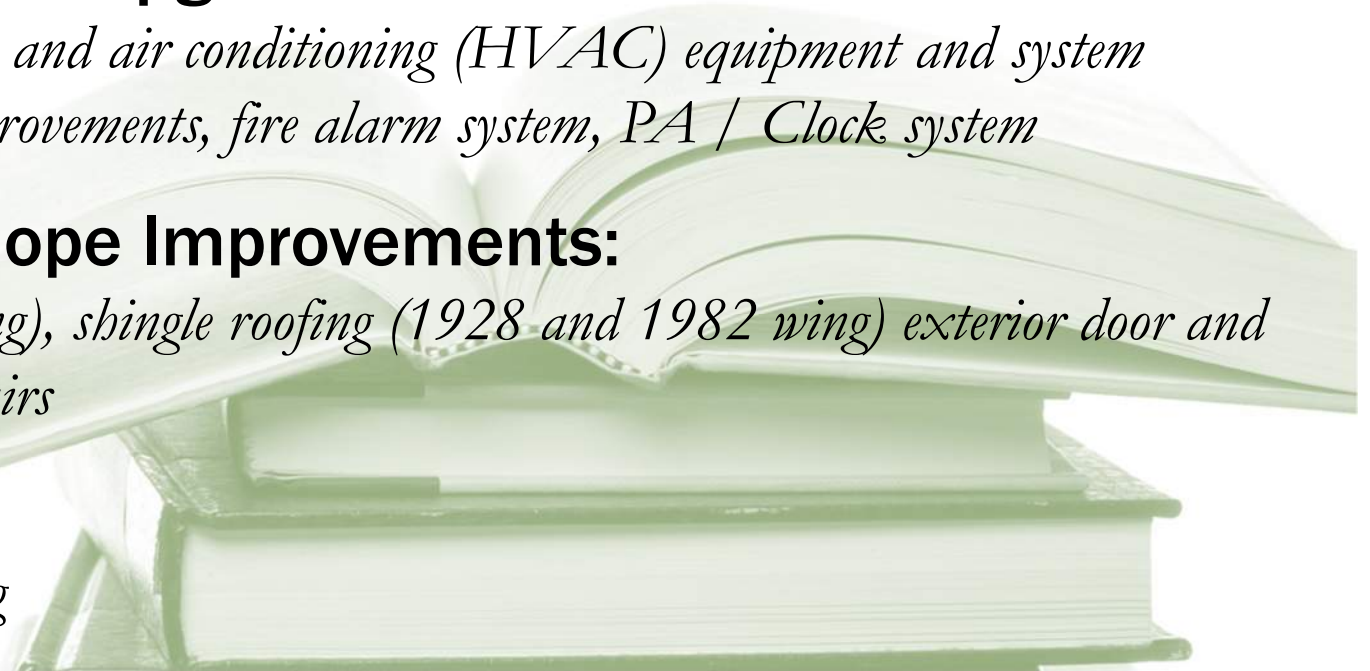
Heating, ventilation, and air conditioning (HVAC) equipment and system controls, lighting improvements, fire alarm system, PA / Clock system

Building Envelope Improvements:

Windows (1928 wing), shingle roofing (1928 and 1982 wing) exterior door and hardware, brick repairs

Site:

3 Repair and regrading





\$ 767_k
of total costs

Safety and Security

INTERIOR ALTERATIONS:

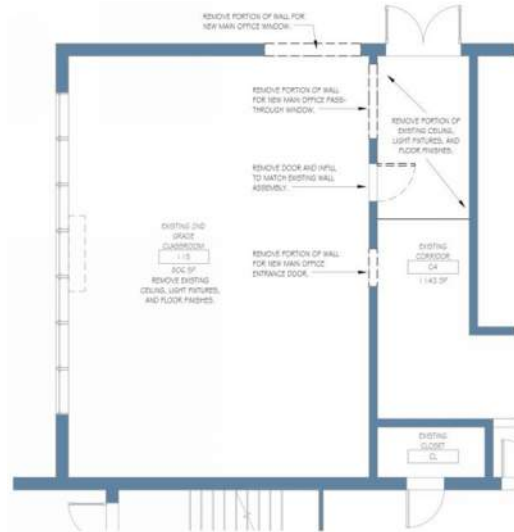
Creating a secure entrance by relocating the main office from the second floor to the first floor and creating a second floor classroom.

Renovations allow direct access from the parking lot to the main office.

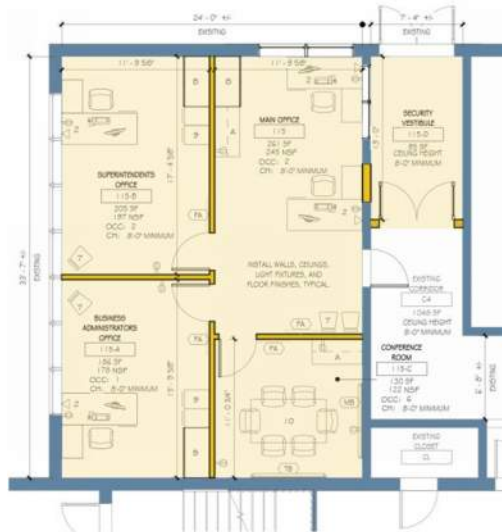
Providing an added level of security to the school and ADA accessibility to the main office for visitors.

Alternate bid: Relocate nurse's office to first floor for ADA accessibility.

SAFETY AND SECURITY



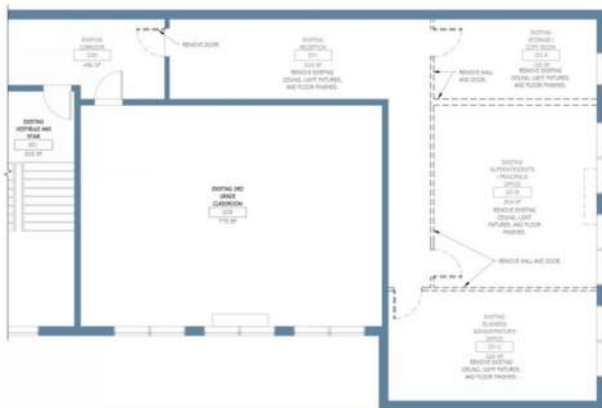
Existing Classroom



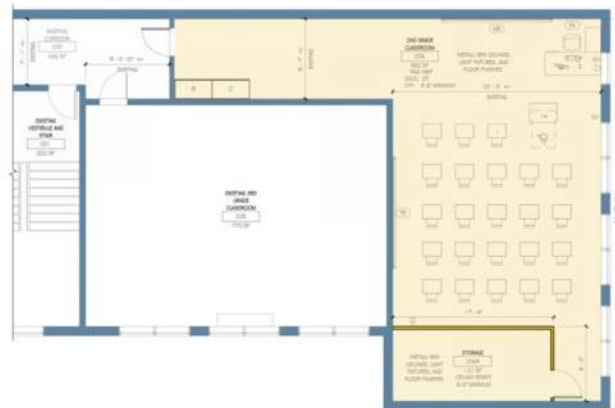
New ADA accessible main office with security vestibule



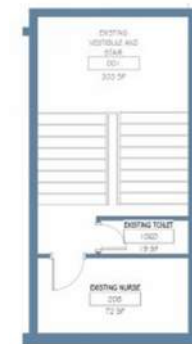
Alternate Bid



Existing Office



Old office renovated to new classroom



Existing Nurse's Office



New Nurse's Office



\$ 878k

of total costs

Safety and Security

Continued

INTERIOR RENOVATIONS:

Replace interior doors and glass to current safety standards.

Toilet room fixtures are inefficient and not up to today's codes and standards.

Door hardware does not meet ADA requirements or security protocols.

Replace carpet with vinyl composite tile.

Replace gym urethane flooring.

WHY SHOULD THE DOORS BE REPLACED?



SAMPLE NEW DOOR

CURRENT DOORS

- Wire glass and doorknobs do not meet code
- Does not meet today's security standards

NEW DOORS

- Upgrade to current NJ state school security standards
 - Intruder door locks, offset vision panel
- Update to UCC and NJIBC 2015 code and safety standards
 - Tempered glass, door closers, smaller vision panel, lever handles

WHY DO TOILET ROOMS NEED TO BE UPDATED?



EXISTING BOYS TOILET ROOM

CURRENT TOILET ROOMS

- Outdated; damaged
- Do not meet current code requirements
- Hard to find replacement parts



SAMPLE NEW TOILET ROOM

NEW TOILET ROOMS

- Bring Toilet rooms up to today's ADA, plumbing, & ventilation code standards



\$ 2.14 M
of total costs

Building Systems

Outdated systems cost time and money with band-aid fixes.

Does not benefit the overall learning environment for the students.

WHY DO BOILERS AND UNIT VENTILATORS NEED TO BE REPLACED?



SAMPLE NEW UV



SAMPLE NEW BOILER

CURRENT SYSTEMS

- Outdated
- Inefficient
- Reached the end of their useful life
- Approximate Average Annual Maintenance and Repair: \$25,000

NEW SYSTEMS

- Improved efficiency
- Annual energy & cost savings

WHY DOES LIGHTING NEED TO BE REPLACED?



CURRENT LIGHTING

- Outdated
- Inefficient
- Hampers learning



SAMPLE NEW LIGHTING

NEW LIGHTING

- Improved efficiency
- 30 to 40% Annual energy & cost savings
- Enhances learning



\$ 979_k
of total costs

Building Envelope

Old windows and exterior doors are dangerous not energy efficient, not repairable nor secure.

Old shingle roofing is damaged and worn.

Old shingle roofing out of warranty and end of useful life.

WHY SHOULD WINDOWS BE REPLACED?



CURRENT WINDOWS

- Costs money with energy losses
- Safety concerns
- Repair Parts unavailable



NEW WINDOWS

- Saves money
- Energy efficient
- Enhances the learning environment
- Improves safety and security

SAMPLE NEW WINDOWS

WHY SHOULD THE ROOF BE REPLACED?



EXISTING ROOF



SAMPLE NEW ROOF

CURRENT ROOF

- Damaged and at end of useful life
- Continuous maintenance
- No longer under warranty

NEW ROOF

- Ensures Weather tightness
- Reduces maintenance





\$ 49k
of total costs

Site Work

The improper courtyard drainage has been an ongoing problem and maintenance issue for many years

The regrading of the site and replacement of sidewalks will eliminate the water infiltration problems, reducing the need for repairs and maintenance

WHY IS THE SITE WORK NECESSARY?



CURRENT DRAINAGE

- Ongoing maintenance problem
- Rainwater enters the building



NEW DRAINAGE

- Sidewalk and site slope away from the building
- Building stays dry
- Reduces maintenance

2014	OCTOBER DECEMBER	Facility Assessment Initial Budget Review
2016	JANUARY	Budget Update
2017	January April June July September October	Budget Rereview Facility Reassessment NJ DOE Submission Preliminary DOE Approval Final DOE Approval Referendum Sept. 26, 2017 from 2pm to 8pm Design
2018	FEBRUARY MARCH OCTOBER DECEMBER	Bid Package Construction Punchlist Close out



PRELIMINARY SCHEDULE

TOTAL ESTIMATED COSTS

TOTAL REFERENDUM \$ 4,814,615

Average Estimated Fiscal Year Tax Impact Per \$100: \$0.134

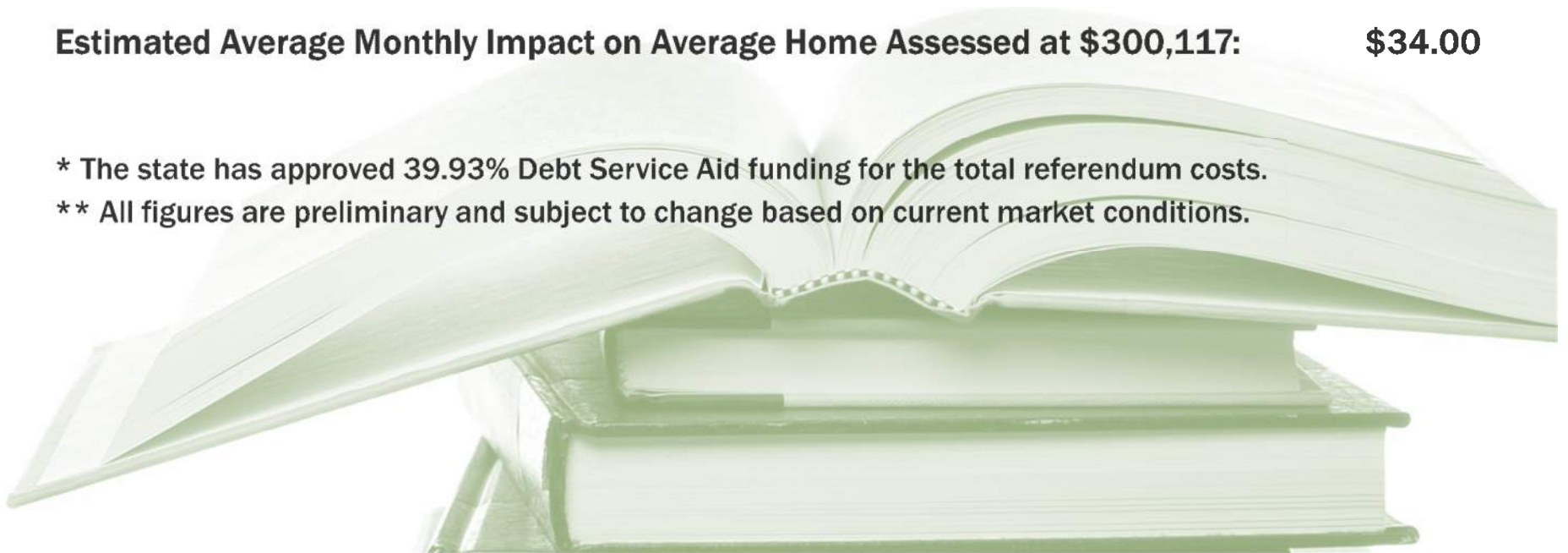
Estimated Average Monthly Impact on Home Assessed at \$100,000: \$12.00

Estimated Average Monthly Impact on Home Assessed at \$200,000: \$23.00

Estimated Average Monthly Impact on Average Home Assessed at \$300,117: \$34.00

* The state has approved 39.93% Debt Service Aid funding for the total referendum costs.

** All figures are preliminary and subject to change based on current market conditions.





WHY PURSUE A REFERENDUM NOW?

- ✓ **Costs & interest rates remain low.**
- ✓ **Taxes Directly Benefit Farmingdale residents.**
- ✓ **More cost-effective than ‘repair-as-we-go’ approach.**
- ✓ **Referendum is required to capture state funding. No guarantee that Debt Service Aid funding will be available in the future.**
- ✓ **Referendum reduces the impact on annual maintenance budget; allowing more funds for curriculum & programs.**
- ✓ **Local costs reduced overall by 39.93 % through State Aid.**
- ✓ **Expected energy & cost savings, including rebates.**

MAKE A DIFFERENCE

VOTE TUESDAY

SEPTEMBER 26, 2017

2PM TO 8PM

AT FARMINGDALE

COMMUNITY CENTER

